

46/176

BOCA WALK

PART OF BOCA DEL MAR, A P.U.D.

A PORTION OF LAND BEING A REPLAT OF A PORTION OF TRACT 35 "BOCA DEL MAR NO. 4" P.U.D., ACCORDING TO THE PLAT THEREOF AS RECORDED IN PLAT BOOK 30 AT PAGE 85 AND LYING IN SECTION 22, TOWNSHIP 47 SOUTH, RANGE 42 EAST, PALM BEACH COUNTY, FLORIDA.

AUGUST, 1983

SHEET 2 OF 3

176

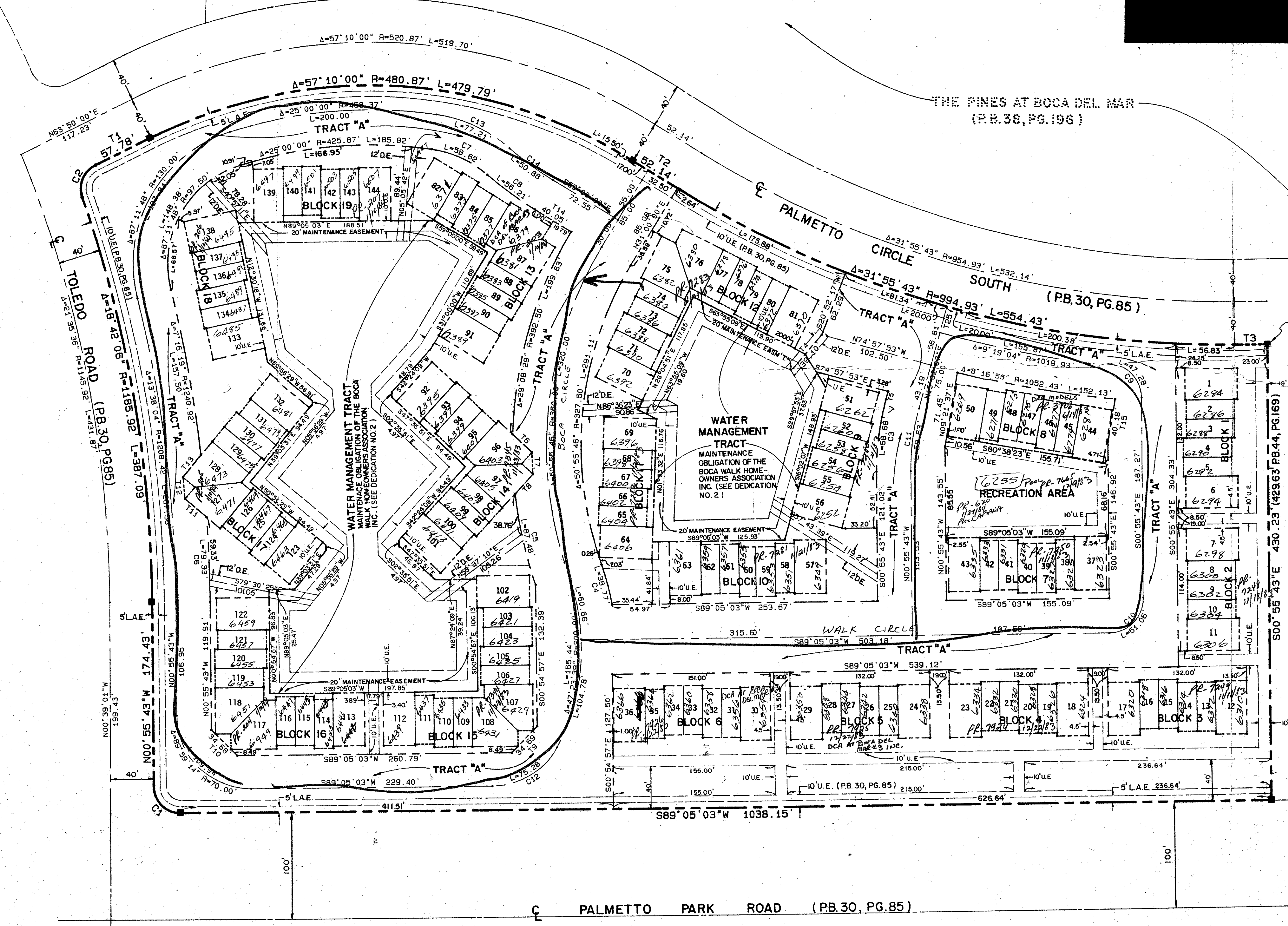
STATE OF FLORIDA
COUNTY OF PALM BEACH
THIS PLAT WAS FILED FOR
RECORD AT
THIS DAY OF
AUGUST, 1983 AND DULY RECORDED
IN PLAT BOOK ON PAGES
AND
JOHN B. DUNKLE, CLERK
CIRCUIT COURT
BY: D.C.



SCALE IN FEET
1" = 50'

RATIOS ON THE PARK P.U.D.
(PB. 39, PG. 93)

THE PINES AT BOCA DEL MAR
(PB. 38, PG. 196)



SITE AREA	=	14.0 AC.
UNITS	=	144 D.U.
GROSS DENSITY	=	10.29 D.U./AC.
% RESIDENTIAL USE	=	100%
BUILDING AREA	=	2.7 AC. (17.8%)
WATER BODIES	=	1.37 AC. (9.79%)
STREETS & UNCOVERED PARKING	=	3.31 AC. (23.62%)
RECREATION AREA	=	0.38 AC. (2.71%)
OPEN SPACE (INCL. LAKES)	=	7.90 AC. (56.50%)
PARKING REQUIRED	=	288 SPACES
PARKING PROVIDED	=	296 SPACES

NO.	DELTA	RADIUS	LENGTH
C1	89° 59' 14"	25.00	39.26
C2	83° 27' 49"	25.00	36.42
C3	15° 57' 50"	246.50	68.68
C4	9° 33' 19"	232.50	38.77
C5	42° 46' 11"	392.50	97.48
C6	5° 39' 47"	1240.38	79.33
C7	32° 46' 11"	102.50	58.62
C8	9° 24' 12"	342.50	56.21
C9	83° 21' 14"	32.50	47.28
C10	90° 00' 46"	32.50	51.06
C11	15° 57' 50"	214.00	59.63
C12	61° 37' 10"	70.00	78.28
C13	32° 46' 11"	135.00	77.21
C14	9° 24' 12"	310.00	50.88

NO.	BEARING	DISTANCE
T1	N63° 50' 00" E	52.14
T2	S59° 00' 00" E	44.32
T3	N89° 04' 17" E	7.97
T4	S41° 02' 13" W	25.07
T5	S15° 02' 07" W	20.55
T6	S47° 35' 51" E	25.07
T7	S02° 35' 51" E	25.07
T8	S42° 24' 09" W	34.69
T9	S44° 05' 03" W	34.68
T10	N45° 54' 57" W	26.81
T11	N50° 56' 29" W	14.80
T12	N05° 56' 29" W	21.54
T13	N39° 03' 31" E	33.77
T14	S59° 00' 00" E	12.54
T15	S09° 21' 37" W	23.24
T16	N63° 55' 09" W	14.80
T17	S29° 57' 53" E	21.54
T18	N05° 05' 03" E	21.54
T19	N05° 56' 29" W	21.54
T20	N05° 56' 29" W	21.54
T21	S59° 00' 00" E	21.54
T22	S02° 35' 51" E	21.54
T23	S02° 35' 51" E	21.54
T24	N87° 24' 09" E	26.81
T25	N15° 02' 07" E	25.00

0205-326

Subdivision: Boca Walk
 BOOK: 46 PAGE: 176
 FLOOD ZONE: ANI FLOOD MAP: 2305
 ROAD: 137 ZONING: RP CODE: 33433
 PLU: R-1M

Meridian Surveying and mapping inc.
 EST. PALM BEACH, FLORIDA
 DRAWN: M.E.H. DATE: JULY 28, 1983
 CHECKED: SCALE: 1" = 50'
 DRAWING NO.: 83-P-02
BOCA WALK
 PART OF BOCA DEL MAR, A P.U.D.

DRAWING NUMBER

DRAWING NUMBER

DRAWING NUMBER

PLAN HOLD CORPORATION • IRVINE, CALIFORNIA
RESUBMIT NUMBER 0754R